

Surface-mounted luminaire - Silky matt parabolic louvres - direct distribution

Sheet steel housing, rectangular cross-section, plastic end faces with integrated light run connectors; Housing colour traffic white RAL 9016; Light distribution direct distribution by means of Silky matt parabolic louvres of aluminium, Reflectivity-enhanced, self-engaging, hinged down on both sides; continuous effect of louvres with light run installation; neutral white light colour (840) with very good colour consistency and high colour rendering Ra=80. Suitable for VDU workstations, 65° < 1000 cd/m<sup>2</sup> omnidirectional glare reduction in accordance with current DIN-EN 12464-1 standard, UGR (4H/8H) 19.1. Electrical connection via 3-pole connection terminal with plug-in contacts.. Can be mounted on mounting rail. Necessary accessories available on request.

**CHARACTERISTICS**

Order number	65040014160
EAN number	4020863281053
Commodity code	94051190
Certification mark	IP 20, Protection class I, VDU 65°<1000, ENEC10 VDE, F, Indoor, CE
Impact resistance (IK rating)	IK03
Ambient temperatur	ta 25°C
Warranty period	5 years
State funding programs	BEG - Federal funding for efficient buildings (valid only for Germany)

**ELECTRICAL ENGINEERING**

Controller	Electronic driver (1 pcs.)
System output	21W
Mains voltage	230V/50Hz
Circuit breakers (inrush current)	19 pieces/B10, 30 pieces/B16, 31 pieces/C10, 50 pieces/C16
Energy efficiency class/light source	B

**LIGHTING TECHNOLOGY**

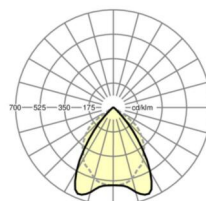
Placement	LED, Colour rendering/Light colour CRI ≥ 80 / 4000K
Colour tolerance (MacAdam)	3SDCM
Nominal luminous flux	3230lm
LED service life	50000h L80/B10 (Tq 25°C)
Luminaire luminous efficiency	155lm/W
UGR lat./long.	15.5 / 19.1

**MECHANICS**

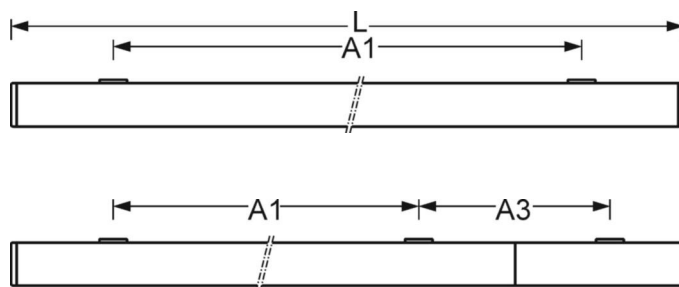
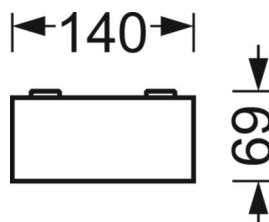
Housing colour	traffic white RAL 9016
Dimensions (LxWxH/DxH)	1188mm x 140mm x 69mm
Weight (net)	4.05kg
Cable entry KE (X/Y)	75mm/-41mm
Type of installation	Ceiling-mounted single installation, Ceiling-mounted trunking installation, Pendulum mounting rail assembly on chain, Ceiling-mounted mounting rail installation, Ceiling-mounted mounting rail installation on T-system

**DEEP-LINK**

<https://www.regiolum.de/en/article/65040014160>



Reference	LED 3200lm 840
ηLB	100 %
Φ ↓/↑	100 % / 0 %
UGR lat./long.	15.5 / 19.1
VDU	65° < 1000cd/m <sup>2</sup>



## Dimensions

L	1188 mm	Length
B	140 mm	Width
H	69 mm	Height
A1	800 mm	Mounting distance single mounting
A3	376 mm	Mounting distance between luminaires in a light run arrangement
X	75 mm	Distance cable infeed to the center of the luminaire on the X-axis
Y	-41 mm	Distance cable infeed to the center of the luminaire on the Y-axis